



Meadows House, Chelsea Creek  
Fulham SW6

GARTONJONES.COM



# Meadows House, Chelsea Creek Fulham, SW6

## £650 Per Week

ONLINE VIDEO AVAILABLE — Furnished One-Bedroom  
Manhattan Apartment, Chelsea Creek

A beautifully presented one-bedroom apartment on the 5th floor of Meadows House, Chelsea Creek, offering 465 sq ft (43 sq m) of stylish, high-specification living. Available furnished, the apartment features a bright open-plan reception room leading to the bedroom with built-in wardrobes, and a modern kitchen with marble worktops and integrated appliances. A balcony overlooks the development, while a quality bathroom includes a bathtub with overhead shower. Additional features include underfloor heating, comfort cooling, and excellent storage throughout.

Residents enjoy exclusive access to the development's gym, swimming pool, spa facilities, and a 24-hour concierge. Chelsea Creek is moments from Imperial Wharf Overground Station, a short walk to Fulham Broadway Underground, and surrounded by cafés, restaurants, and riverside amenities.

A superb opportunity to rent a luxury, turnkey apartment in one of West London's most sought-after waterside developments.

\*\* Please note furniture may differ to that shown in the current photos \*\*

5 Weeks Deposit  
12-Month Contract  
London Borough Of Hammersmith & Fulham Council — Band E

EPC — B (89)

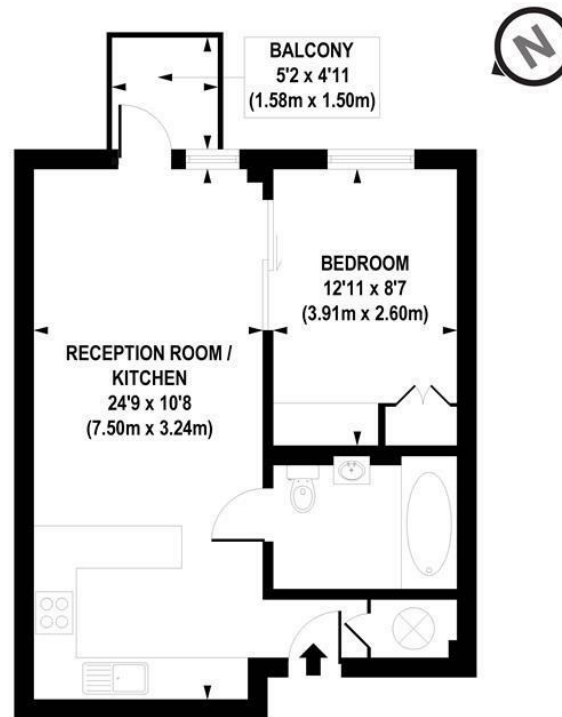
- Manhattan Style Apartment
- 465sq.ft (43sq.m)
- 5th Floor — with lift
- Stylish Furniture
- Modern Development
- Balcony
- Swimming Pool & Spa
- 24 Hour Concierge
- Close to Imperial Wharf Station
- EPC — B (89)

GARTON JONES.COM

13 Park Street  
Chelsea Creek  
London  
SW6 2FS

Lettings:  
+44 (0) 20 7824 7090  
paul@gartonjones.com  
www.gartonjones.com





APPROX. GROSS INTERNAL FLOOR AREA 465 sq. ft / 43.18 sq. m

Floorplan is for illustrative purposes only and is not to scale.  
Every attempt has been made to ensure the accuracy of the floorplan shown, however all measurements, fixtures, fittings and data shown are an approximate interpretation for illustrative purposes only.  
Liability for errors, omissions or mis-statement through negligence or otherwise is hereby excluded.

CP CREATIVE  
PROPERTY MARKETING

